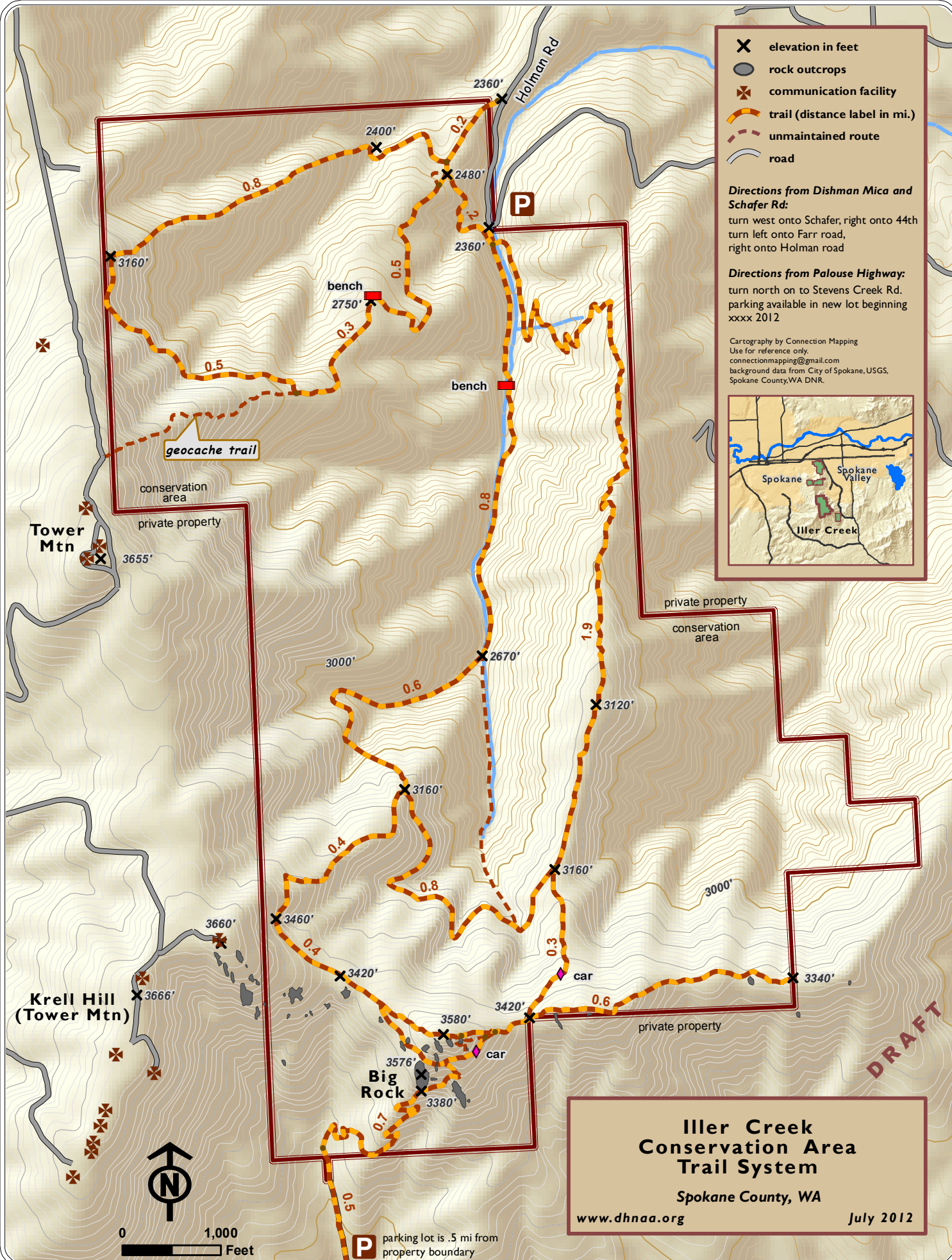


- ✕ elevation in feet
- rock outcrops
- ✕ communication facility
- trail (distance label in mi.)
- - - - - unmaintained route
- road

Directions from Dishman Mica and Schafer Rd:
 turn west onto Schafer, right onto 44th
 turn left onto Farr road,
 right onto Holman road

Directions from Palouse Highway:
 turn north on to Stevens Creek Rd.
 parking available in new lot beginning
 xxxx 2012

Cartography by Connection Mapping
 Use for reference only.
 connectionmapping@gmail.com
 background data from City of Spokane, USGS,
 Spokane County, WA DNR.



**Iller Creek
 Conservation Area
 Trail System**
 Spokane County, WA
www.dhnaa.org July 2012

P parking lot is .5 mi from property boundary